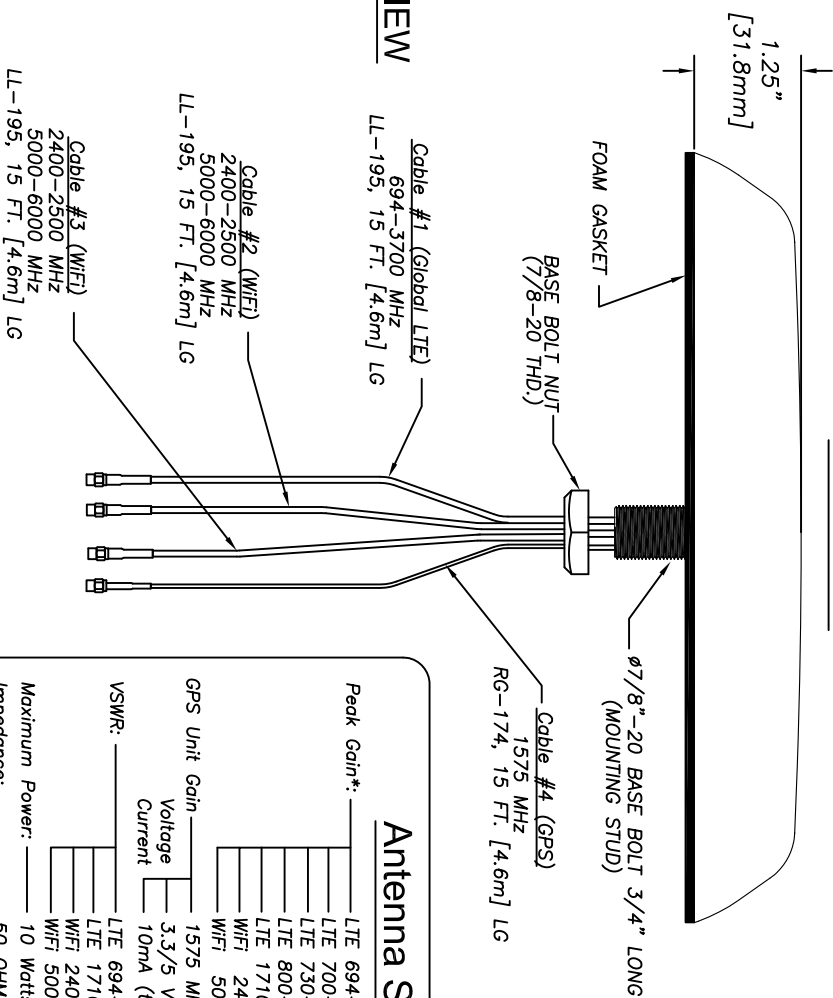




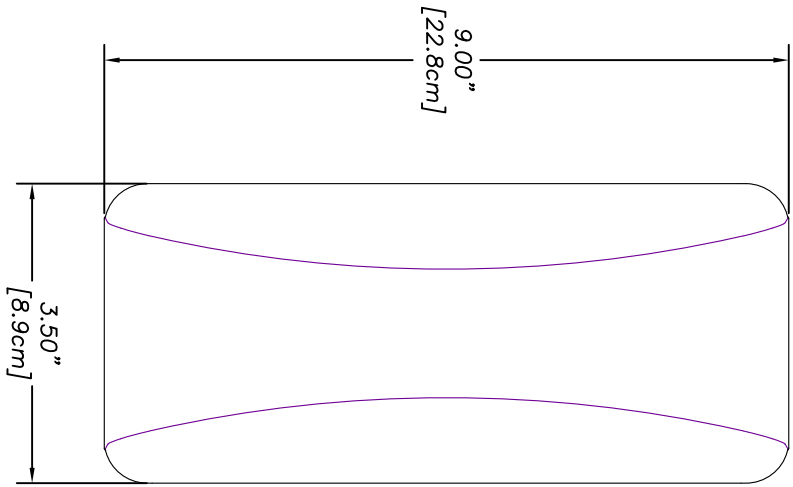
LLP403-3C3C3C2C-BLK-180

Multi-band Surface Mount Antenna
1 X Global LTE MIMO 694-3700MHz
2 X WiFi 2400-2500/5000-6000MHz
with GPS

SIDE VIEW



TOP VIEW



Antenna Specifications:

Peak Gain*:	LTE 694-700 MHz	-1dBi
	LTE 700-730 MHz	1dBi
	LTE 730-800 MHz	2dBi
	LTE 800-960 MHz	3dBi
	LTE 1710-3700 MHz	4dBi
	WiFi 2400-2500 MHz	4dBi
	WiFi 5000-6000 MHz	5dBi
GPS Unit Gain	1575 MHz	26 dB, 5 dBi
Voltage	3.3/5 VDC	
Current	10mA (typ.), 20mA (max.)	
VSWR:	LTE 694-960 MHz	< 2.5:1
	LTE 1710-3700 MHz	< 2:1
	WiFi 2400-2500 MHz	< 2:1
	WiFi 5000-6000 MHz	< 2:1
Maximum Power:		10 Watts
Impedance:		50 OHM Nominal
Cable:	15 Ft. (4.5m) LL-195 (Global LTE/WiFi)	
	15 Ft. (4.5m) RG-174 (GPS)	
Connector/Interface:	SMA Plugs (LTE, WiFi, GPS)	
Mounting:	Thru Hole, Ground Plane dependent	
Shock & Vibration:	(Pending) IEEE1478, EN 61373, MIL-810G, TA 329.2-C	
Dust/Water Ingress:	(Pending) IP67	
Operating Temperature:	-40° to +80° C	

antenna solutions
MobileMark

US OFFICE & HEADQUARTERS: 1140 W. THORNDALE AVE. ITASCA, IL 60143
 TEL: (847) 671-6690 * FAX (847) 250-5120
 UK OFFICE: 8 MIRAS BUS PARK, KEYS PARK ROAD, HEDNESFORD WS12 2FS, UK.
 UK TEL: (+44) 1543-489555 FAX (+44) 1543-489545
 VISIT OUR WEBSITE AT WWW.MOBILEMARK.COM

